

Unsheltered Homelessness in the U.S. : Characteristics, Trends, and Strategies to Address



Samantha Batko, National Alliance to End Homelessness
June 5, 2017

Presentation Overview

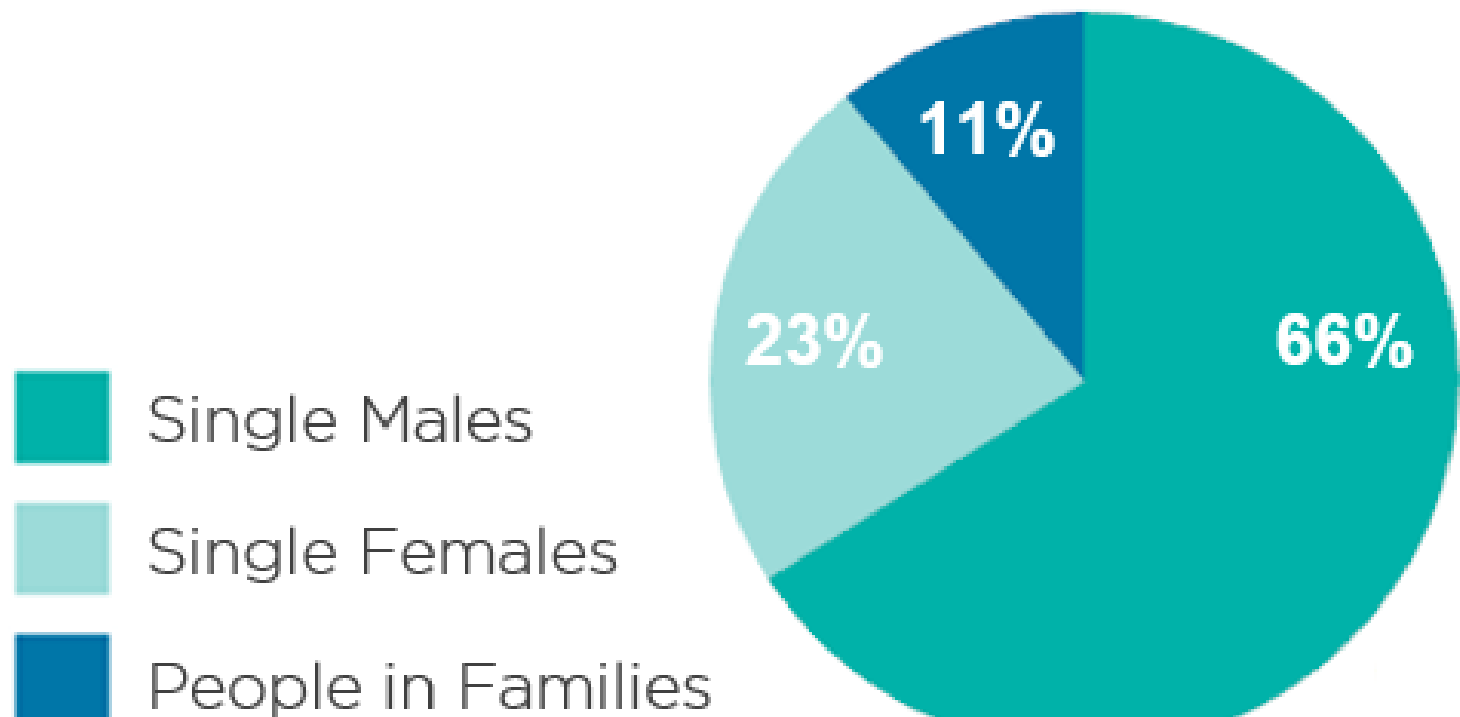
- Unsheltered Homelessness in the U.S.
- Trends in U.S. Unsheltered Homelessness
- Contributing Factors
- Strategies for Consideration

Data

- U.S Department of Housing and Urban Development
- U.S. Census Bureau
- Survey Responses

Unsheltered Homelessness in U.S.: Characteristics

UNSHELTERED HOMELESSNESS BY HOUSEHOLD TYPE, 2016

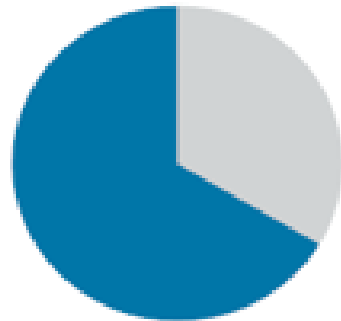


Unsheltered Homelessness: Geography

PERCENT OF HOMELESS INDIVIDUALS THAT IS UNSHELTERED BY REGION, 2016

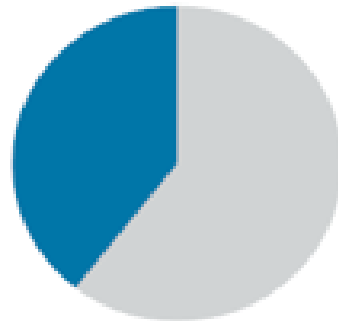
West

66%



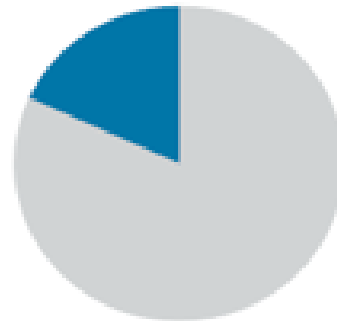
South

39%



Midwest

18%



Northeast

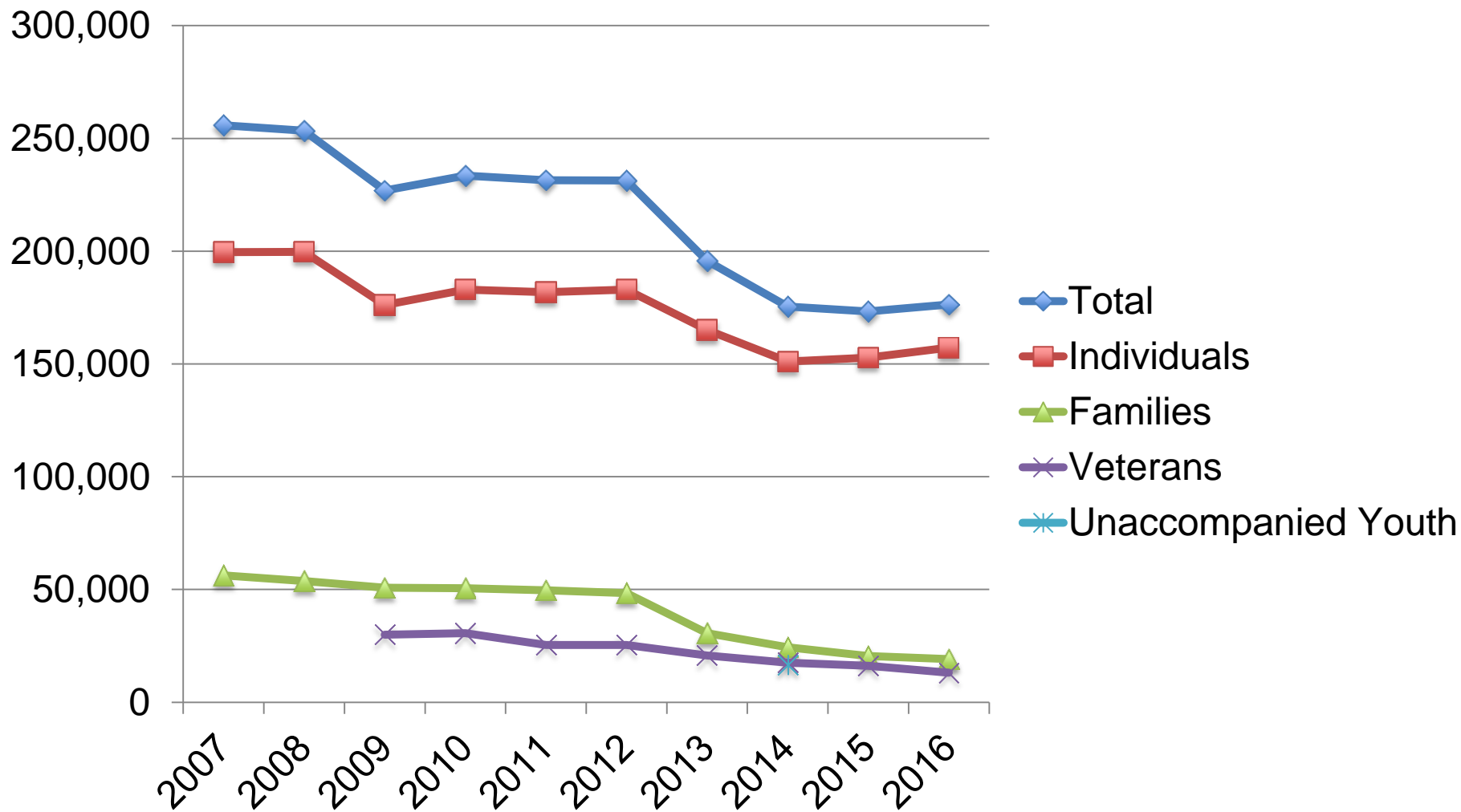
13%



 Unsheltered

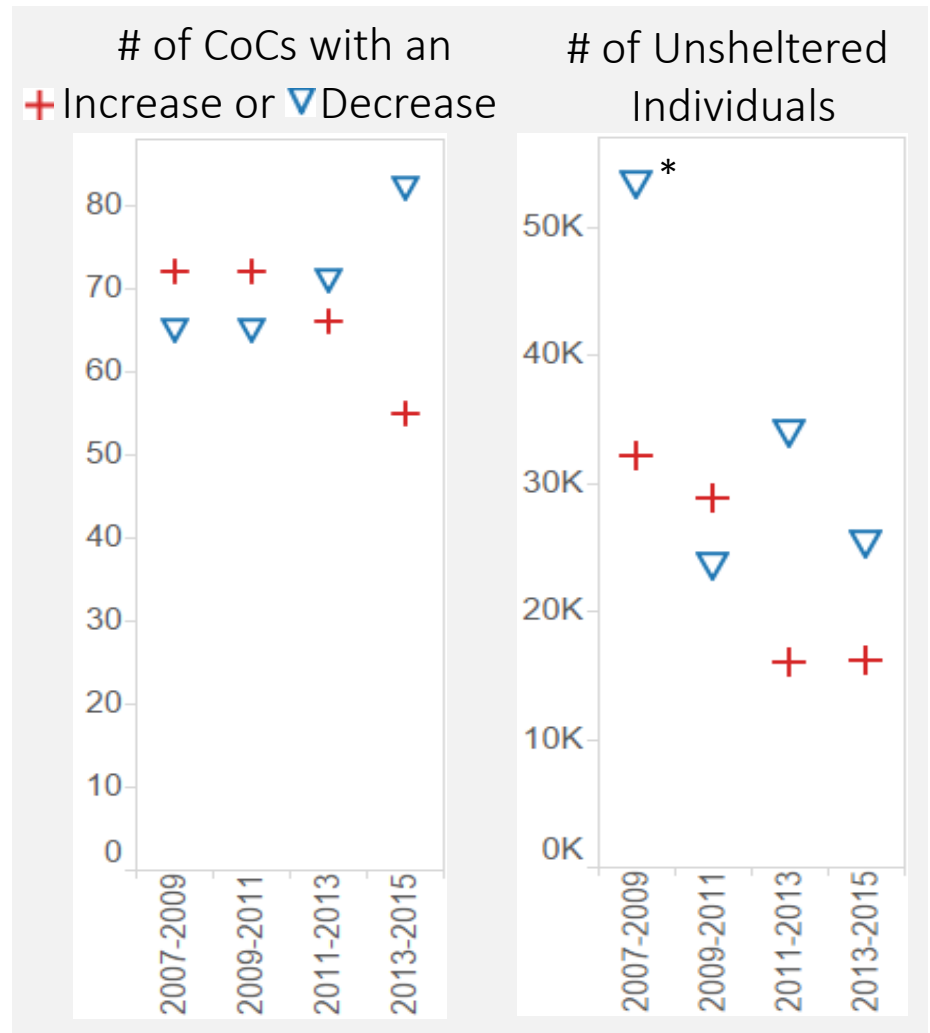
 Sheltered

Trends in Unsheltered Homelessness



The number of CoCs reporting increases in unsheltered individuals and the size of these increases appear to be declining.

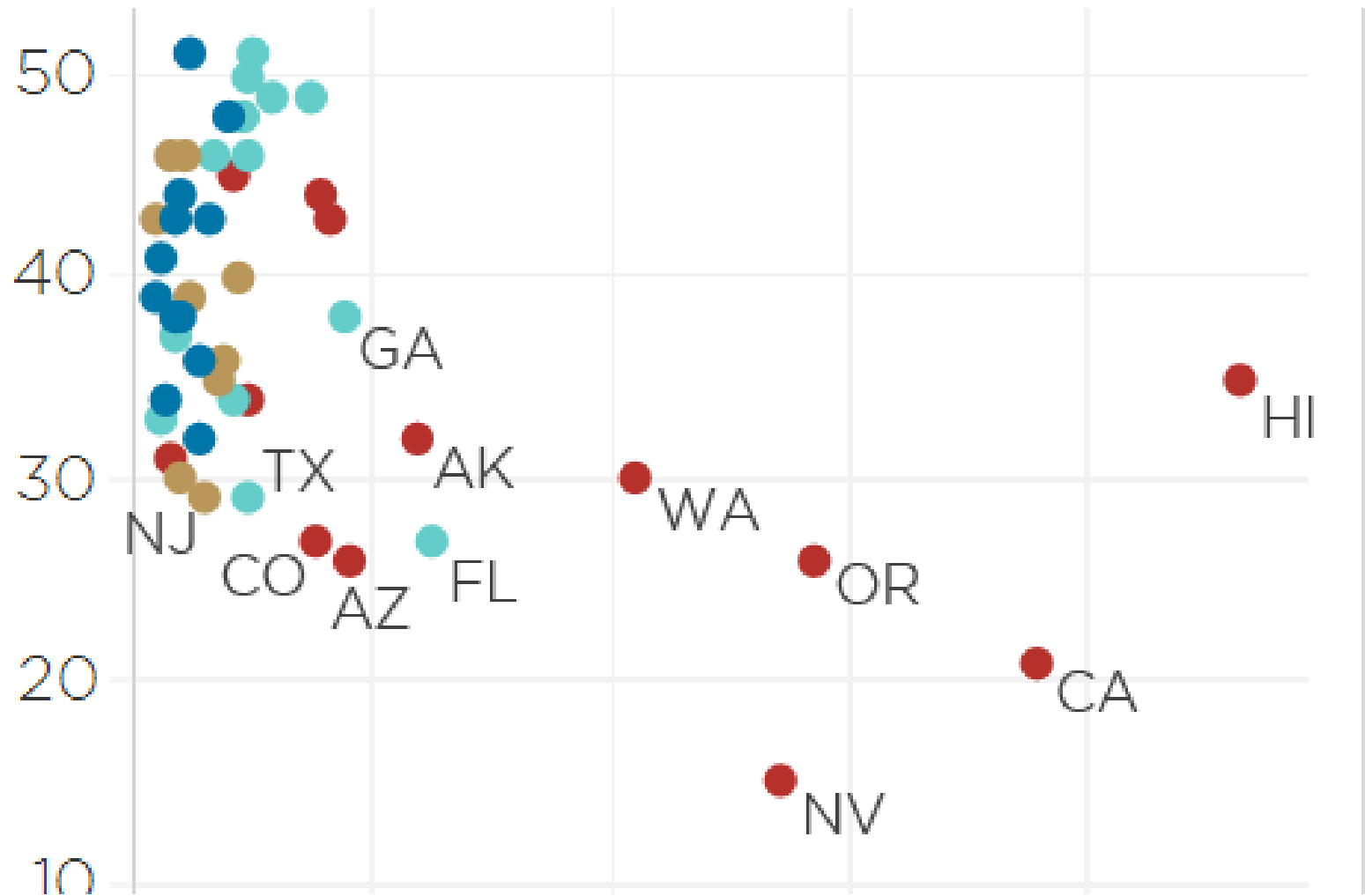
+ Increase
 ▽ Decrease



* LA = 17,586

(amongst CoCs regularly counting >100 unsheltered individuals)

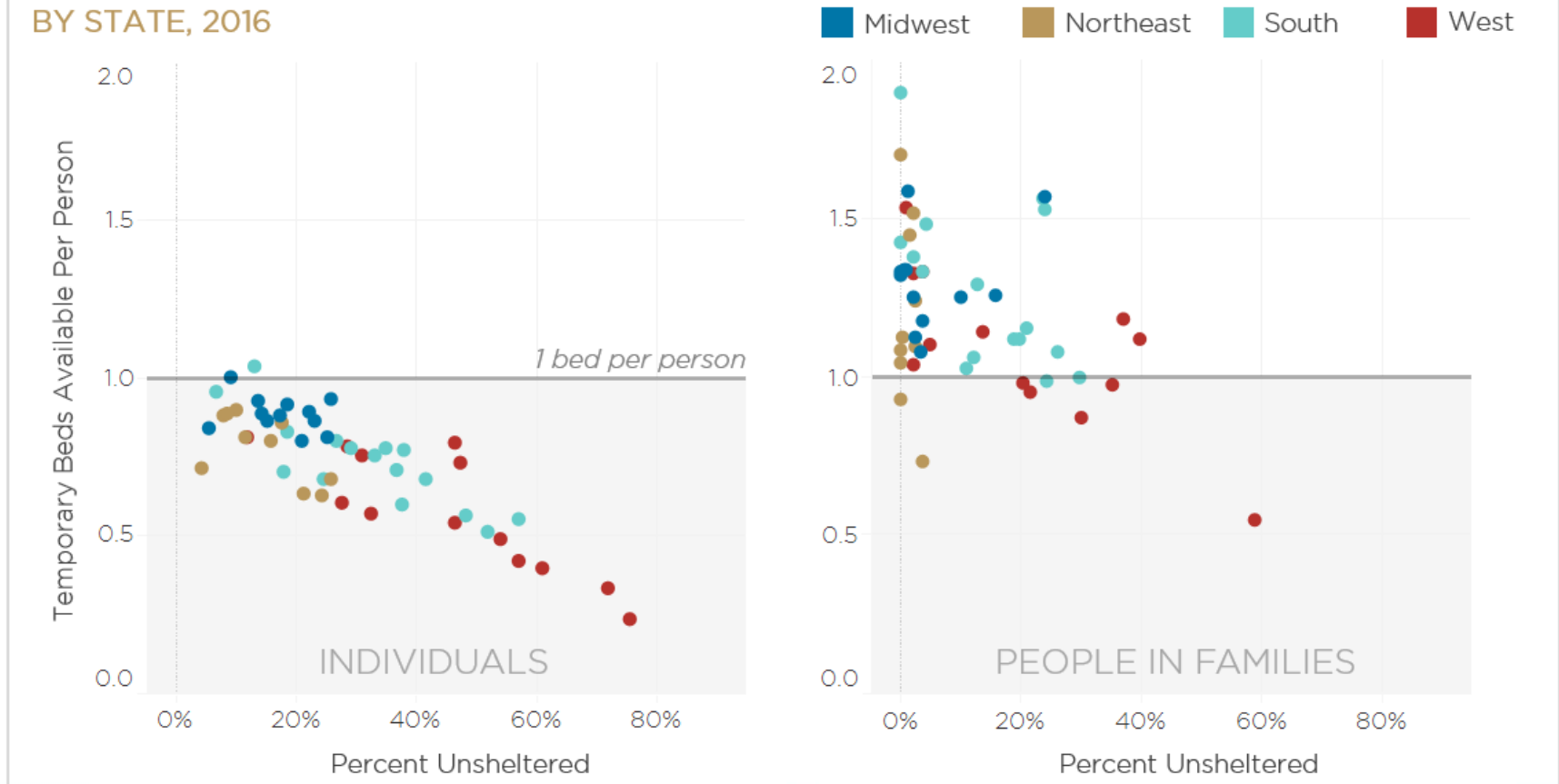
Contributing Factor: Housing Markets



Contributing Factor: Homeless Assistance Resources Decisions

FIGURE 10

YEAR-ROUND TEMPORARY BEDS BY HOUSEHOLD TYPE VS PERCENT UNSHELTERED, BY STATE, 2016



Contributing Factor: Barriers to Assistance

- No pets allowed
- First-come, first-served
- Time limit
- Not open 24 hours
- Single gender only
- Requires job search
- Requires sobriety
- Requires faith-based activities

Strategies for Consideration

- Invest in affordable housing.
- Create permanent housing exit routes.
- Reallocate temporary housing.
- Improve operating policies at shelters.
- Address substance use through outreach efforts.
- Involve police in engagement efforts as opposed to enforcement.

Questions?

Samantha Batko

National Alliance to End Homelessness

sbatko@naeh.org

Survey Response Summary

CoCs responding by state

